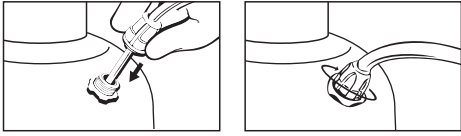


ASSEMBLE HOSE TO TANK



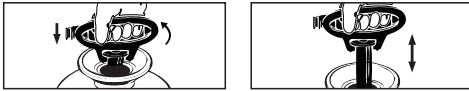
1. Insert supply tube into the small tank opening and screw the tank nut down.
2. Make sure the tank nut is tight, if loose, it may come off with force or spray may escape, resulting in injury.

HOW TO FILL



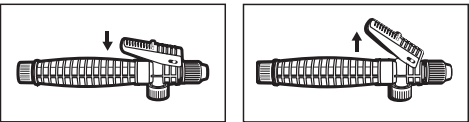
1. Pour measured amount of spray material into the open tank. Follow label directions on spray material container for amount to use.
2. Add water as directed. Do not fill beyond the max fill line.
3. Insert pump and turn clockwise to seal. Do not over tighten.

HOW TO PRESSURIZE



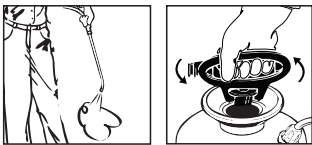
1. Unlock the pump hand by pushing down and turning counterclockwise.
2. Using the handle, pump up and down. (the more you pump, the more pressure you will build inside the tank. When it becomes difficult to pump, your tank has reached maximum pressure.)
3. Do not stand so your head is over the pump.

HOW TO SPRAY



1. Squeeze the trigger on the handle to spray.
2. Push the trigger forward to lock on for continuous spray.
3. Then push the trigger back down to unlock.

HOW TO RELEASE PRESSURE



Turn sprayer on its side and turn nozzle away from you. Squeeze shut off trigger to let all the air escape. Turn sprayer upright and slowly unscrew pump from tank and remove it.

SERVICE AND MAINTENANCE

Clean and dry your sprayer after every use to greatly prolong its useful service life. Many spray materials will harden if left in the sprayer and plug up the nozzle, shut-off valve or supply tube. The soft parts, O-rings and gaskets, will ultimately wear out and need replacing, just like the oil filter on your car, for example. How often they need replacing depends on how much you spray, the spray materials you use and whether or not the sprayer is regularly cleaned after use. Call 1-800-9-SPRAYER to obtain genuine Hudson® replacement parts. If you leave your sprayer in the garage over winter, particularly in northern areas, the soft parts may dry out and need servicing before you use your sprayer for the first time in the spring.

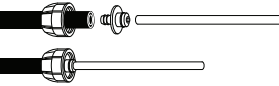

FOR YOUR SAFETY

This sprayer operates with liquid under pressure. Failure to observe cautions and follow instructions for use and maintenance can cause tank, hose or other parts to become corroded, weakened, and/or burst. This can result in serious injury or property damage from forcible ejection of parts or high-pressure discharge of spray material. Do not use any flammables or boiling liquids in this sprayer as it is not designed nor intended for such use. **Not for use with acetone based products.** Some spray materials can ignite or explode. Do not spray in an enclosed space, near an open flame such as found in a bbq grill or water heater, near an electric motor or open switch, or any source of heat. Do not smoke while spraying. Use of flammables could result in serious injury or property damage from unintended ignition or explosion. Do not use any caustics or acids in this sprayer, since these can damage or weaken the sprayer and its parts, resulting in serious injury or property damage. Keep out of reach from children and pets. Always read and follow directions on the spray material container, including the need for protective clothing. Before using your sprayer, thoroughly inspect both inside and outside of the sprayer and do not pressurize sprayer if tank, hose or other parts appear to be damaged, discoloured, brittle, excessively soft or loose. Do not pressurize with any mechanical device such as an air compressor, since this can create dangerous pressure and bursting of parts and result in serious injury. Wear long-sleeved shirt, pants, gloves, goggles or similar protective clothing when spraying. **PROP 65 WARNING:** This product can expose you to one or more chemicals, including lead, known to the State of California to cause cancer and birth defects or other reproductive harm. **Wash hands after handling.** For more information go to www.p65warnings.ca.gov.

LIMITED WARRANTY

H. D. Hudson Manufacturing Company warrants to the original consumer purchaser of this product at retail that it is free from problems in materials and workmanship for the period of 1 year from the original date of purchase. Visit hdhudson.com for specific model warranty period. This warranty does not apply to damage to the product resulting from accident, misuse, neglect, alteration, modification, tampering, or failure to follow instructions supplied with the product. This warranty does not cover normal wear and tear of o-rings or seals, and the warranty shall be void if the product is used commercially. If the product or any part of it should malfunction within the warranty period, call 1-800-977-7293. Valid only in North America. You must retain your sales receipt as proof of the date of purchase and include it with any return of the product. **H. D. Hudson Manufacturing Company excludes liability under this warranty for any and all incidental and consequential loss or damages.**

TROUBLESHOOTING

Problem	Solution	
1. If only air is coming out when you spray that means that the supply tube has fallen off or isn't attached correctly.	Unscrew and pull the hose off of the tank. Then unscrew the pump handle from the tank and get the supply tube out from inside. Reattach the supply tube onto the hose, insert back into the tank, and screw the hose back on.	
2. Sprayer is not holding pressure, check the seals on the pump and make sure they are lubricated. (Recommended lubrication is petroleum jelly.)	A cylinder O-ring is located at the top of the pump and needs to be lubricated often. A check/mono valve is at the bottom of the cylinder and also needs lubrication. The final seal is on the inside of the pump. 1. To access this, unlock the pump handle and pull it out as far as it will go. 2. With a flat head screwdriver, push down on the tabs on each side of the pump to release the locking cap. 3. Pull up on the handle and the plunger assembly will come out of the pump cylinder. The gasket is located on the end of the plunger assembly. 4. To reassemble, insert the plunger assembly into the cylinder and snap the cap back into place.	
3. The sprayer is producing a bad spray pattern.	Check the hose, wand, and nozzle for any clogs. Clean all these parts properly.	

CHEMICAL RECOMMENDATIONS

Recommended for use with:

- ✓ Most chemical weed killers
- ✓ Most chemical insecticides/pesticides
- ✓ Mild cleaners (such as dishwashing detergent, and most disinfectants)

Some sprayers can handle tougher chemicals. Call or email us for a recommendation for your project!
1-800-9-SPRAYER/
ladybug@hdhudson.com

We do not recommend this, or any sprayer, to be used with the following:

- Flammable Products (gasoline, diesel fuel, hydraulic oil, etc.)
- Hot or Boiling Liquids
- Products containing Acetone/Acetate/Acetic Acid (paint thinner, some concrete sealers)
- Highly Viscous (thick) materials (tar, high-solid paint or stain)
- Paint and Stains
- Products containing Chlorine (Bleach, Pool Water, etc.)
- Strong Acids or Bases
- Strong Solvents
- Lacquers or Lacquer Thinners
- Turpentine
- Epsom Salt
- Mineral Spirits
- Vinegar
- Citrus-Based Cleaner
- Products containing Peppermint Oil or Peanut Oil